

FAMILY UPREACH, INC.

NewLife

BEHAVIOR MINISTRIES

November 2022

Since 1984: Reconciling
persons to God, families and
society

“DAY OF GIVING” NOVEMBER 8

A massive effort will be required on Tuesday, **November 8**, to reach our goal of collecting **\$100,000** in online gifts. This has been our unmet target for 8 years. Last year's \$91,964.23 was our best to date. We need all previous donors to do it again plus, **\$8,037 more!** So, mark your calendar and don't forget. This will be our most exciting 24-hour period this year.

In fact, November 8th is so important that almost every square inch of space in this newsletter is dedicated to fully communicating bits of information to capitalize on this rare opportunity.

- We thank the Coastal Bend Community Foundation and its 24 funders for including Family Upreach as a beneficiary of our community's generosity.
- As in 2021, we appreciate those willing to **schedule** early gifts limited to October 31 through November 7 by clicking on the logo to the right and follow the prompts. Then, when 12:01 a.m., arrives on Tuesday, November 8, your contribution will appear.
- The higher the total grows, the less nervous we will be about reaching \$100,000!
- This year's matching sum is UP from last year's \$21,800 to **\$24,000**. When the *first* \$24,000 comes in, it magically turns into **\$48,000!**
- Each penny adds to the total, helping us reach and exceed **\$100,000**. Prayerfully, we will watch it grow until the clock finally strikes at midnight.



Here are more tidbits of information to help . . .

- Online giving is not difficult. Simply visit www.coastalbenddayofgiving.org, tap the "Nonprofits" tab, find Family Upreach, Inc. and click "Donate Now".
- We ask you to be certain that your gift goes to **Family Upreach, Inc.** (dba: **NewLife Behavior Ministries**). Others have names beginning with "Family" or "New Life." Some 2021 donations did not make it to us. ALL non-profits need support, but we do want all the gifts "intended" for us.
- Our "profile" shows how we **fight hunger, help children, improve health, and reduce homelessness.**
- With Corpus Christi as our *home base*, we immediately impact these counties: **Nueces, Kleberg, Jim Wells, San Patricio, Bee, Refugio, and Aransas.**
- The "key" to success is not so much large gifts (though none are refused) as much as it is to receive a *large number* of gifts. **The most common donation is \$20.**
- Most gifts come through **social media** contacts . . . one friend gives \$20 and asks *another friend* to do the same. \$10 is the least amount accepted online.
- It is the "multiplied" effect of generosity that spells **V-I-C-T-O-R-Y** for Family Upreach and for the hungry, ill, children, and homeless. Thank you for sharing God's blessings with us!

IN LOVING MEMORY ~ IN HONOR OF

Family Upreach expresses gratitude to those remembering loved ones and honoring those cherished with gifts. These remembrances allow souls to be taught how to transform destructive behaviors into positive behaviors.

Received from:

M/M Buck Griffith
Jo Ann Knipp
Jo Ann Knipp

In loving memory of:

Bobby Robinson
Maurice Story's mother
Veronica Smith's mother

Received from:

M/M Don Crofton
M/M Buck Griffith
M/M Bob Wachtel

In loving memory of:

Tom Blackstone, Jr.
B. D. Griffith, Sr.
Marilyn Robinson

NEWLIFE BEHAVIOR MINISTRIES "PROFILE"



NLBM Presidents
Buck Griffith has served as President since 2002. Dr. Dale Underwood is to become President on January 1, 2023.

Dale has operated a facility for adjudicated youth the last 10-12 years. His wife, Karlene, handles our reports and bookkeeping.



Award Winner

The 2018 Governor Abbott's "Restorative Justice" Award was given to NLBM by the Texas Board of Criminal Justice. Governor Bush's 1994 award was for the Best State Jail Program. Will you partner with us in this winning tradition?

Through this door...

Very Important People pass through this door daily for help. Some are released from area county jails or nearby prisons. Others are family members or small children of incarcerated parents. Still others are searching for a 12-Step support group.



"Relapse Prevention"

Pat & Glenda Watson are the facilitators for

this Friday night 12-Step support group at our central office with attendance verified to probation and parole officers within 24 hours. Friday is payday for many and a struggle to stay straight and sober.

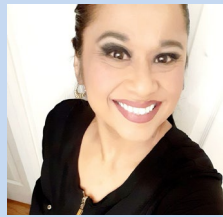
"Little Angels"

We call small children of parents in prison "Little Angels" since they are innocent of any crime parents commit but they do suffer silently. With funds available, we purchase \$25 WalMart gift-cards for them. We want them to know they are loved and deeply valued.



Spanish Studies

Raquel Rivera & Merced Aguilar assist a growing number of BCC students requiring Spanish. In the last few months, we have added 9,300 Spanish students while another 32,000 are taking English lessons.



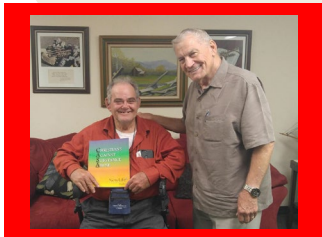
Re-Entry

An inmate asked, "Will you love me *when I get out*?" **Yes!** We offer a hand UP to get back on one's feet. Dr. Dale Underwood is authoring a new workbook on **Re-Entry** to help prisoners better prepare for it and serve as a "guide" upon release. In this photo, two ladies recently released drop by to say "thanks" to Glenda Watson.



VetNet

Sadly, vets are incarcerated. Some had destructive habits when enlisted that worsened. With PTSD, if slightly bumped in a check-out line, one goes berserk. Police arrive, cuffs him and he goes to jail. He deals with shame, guilt, and depression. He and his family need help. We offer our curriculum. He deserves our BEST.



Real People are REALLY Hungry

When some enter our doors right out of jail, the needs are **basic** – food, milk, soap, & daily hygiene items. We try to keep the family intact. They have similar needs.



Solving Homelessness



Working with those behind bars, we keep our eyes out for housing options. Once found, our focus shifts to everything from food to furniture, bedding, and appliances. Certain offenses make this more challenging for some than others.

Healthy Choices

To the extent possible, Family Upreach tries to help with filling scripts and locating resources for medical needs - networking with other agencies. Our **Managing My Dollar** course teaches money-stretching skills and practical budgeting.



Meanest Man Weekends

SMU Professor Emeritus, Dr. Don Umphrey, authored the book, "The Meanest Man in Texas" and



was screenwriter for the movie by the same name. Don joined forces with us at Family Upreach and conducts weekend seminars in prisons to draw crowds. Many enroll in studies and classes. A follow-up Q & A session follows the showing of the movie.

FAMILY UPREACH, INC.

3833 South Staples, Suite S-101, Corpus Christi, Texas 78411

(361) 855-3372 Email: nlbcasa@yahoo.com Website: www.nlbm.org

David A. (Buck) Griffith, President Dr. H.M. Motsinger, Founder, President Emeritus

Board of Trustees: Charles Barber, Jim Burrus, D.C. Chambers, Donald Crofton, Linda Crofton, Lynda Drum, Buck Griffith, Eric Jackson, Dave Olson, Jerry Stephenson, Barbara Tubbs, Craig Tucker, Dr. Dale Underwood, Gary Wyder